



India Meteorological Department
(Ministry of Earth Sciences)

BULLETIN NO. 04 (BOB/09/2022)

TIME OF ISSUE: 1200 HOURS IST

DATED: 07.12.2022

FROM: INDIA METEOROLOGICAL DEPARTMENT (FAX NO. 24643965/24699216/24623220)

TO: CONTROL ROOM, NDM, MINISTRY OF HOME AFFAIRS (FAX.NO. 23093750)

CONTROL ROOM NDMA (FAX.NO. 26701729)

CABINET SECRETARIAT (FAX.NO.23012284, 23018638)

PS TO HON'BLE MINISTER FOR S & T AND EARTH SCIENCES (FAX NO.23316745)

SECRETARY, MOES (FAX NO. 24629777)

H.Q. (INTEGRATED DEFENCE STAFF AND CDS) (FAX NO. 23005137/23005147)

DIRECTOR GENERAL, DOORDARSHAN (23385843)

DIRECTOR GENERAL, AIR (23421105, 23421219)

PIB MOES (FAX NO. 23389042)

UNI (FAX NO. 23355841)

D.G. NATIONAL DISASTER RESPONSE FORCE (NDRF) (FAX NO. 26105912, 2436 3260)

DIRECTOR, PUNCTUALITY, INDIAN RAILWAYS (FAX NO. 23388503)

CHIEF SECRETARY, ANDAMAN & NICOBAR ISLANDS (FAX NO. 03192- 232656)

CHIEF SECRETARY, GOVT. WEST BENGAL (FAX NO. 033-22144328)

CHIEF SECRETARY, GOVT. OF ODISHA (FAX NO. 0674 -2536660)

CHIEF SECRETARY, GOVT. OF ANDHRA PRADESH (FAX NO. 0863-2441029, 08645-246600)

CHIEF SECRETARY, GOVT. OF TAMIL NADU (FAX NO. 044-25672304)

CHIEF SECRETARY, GOVT. OF PUDUCHERRY (FAX NO. 0413-2337575, 2334145)

Sub: Deep Depression over Southwest and adjoining Southeast Bay of Bengal (Pre-cyclone watch for north Tamilnadu, Puducherry and south Andhra Pradesh coasts)

The Deep Depression over Southeast & adjoining Southwest Bay of Bengal moved west-northwestwards with a speed of 15 kmph during past 06 hours and lay centred at 0830 hours IST of today, the 07th December, 2022 over **Southwest and adjoining Southeast Bay of Bengal**, near latitude 8.7°N and longitude 85.7°E, about 500 km east of Trincomalee (Sri Lanka), about 630 km east-southeast of Jaffna (Sri Lanka), about 690 km east-southeast of Karaikal and about 770 km east-southeast of Chennai.

It is very likely to move west-northwestwards and intensify further gradually into a Cyclonic Storm around 07th December evening and reach Southwest Bay of Bengal off north Tamil Nadu-Puducherry & adjoining south Andhra Pradesh coasts by 08th December morning. It will continue to move west-northwestwards towards north Tamil Nadu-Puducherry & adjoining south Andhra Pradesh coasts during subsequent 48 hours.

Forecast track and intensity are given below:

Date/Time(IST)	Position (Lat. °N/ long. °E)	Maximum sustained surface wind speed (Kmph)	Category of cyclonic disturbance
07.12.22/0830	8.7/85.7	50-60 gusting to 70	Deep Depression
07.12.22/1130	8.9/85.4	55-65 gusting to 75	Deep Depression
07.12.22/1730	9.2/84.9	60-70 gusting to 80	Cyclonic Storm
07.12.22/2330	9.6/84.3	70-80 gusting to 90	Cyclonic Storm
08.12.22/0530	10.0/83.8	80-90 gusting to 100	Cyclonic Storm
08.12.22/1730	10.7/82.8	80-90 gusting to 100	Cyclonic Storm
09.12.22/0530	11.4/81.7	70-80 gusting to 90	Cyclonic Storm
09.12.22/1730	12.1/80.8	70-80 gusting to 90	Cyclonic Storm

10.12.22/0530	12.7/80.0	50-60 gusting to 70	Deep Depression
10.12.22/1730	13.1/79.4	30-40 gusting to 50	Depression

Warnings:

(i) Rainfall (warning graphics enclosed)

- ❖ Light to moderate rainfall at most places with heavy to very heavy falls at isolated places very likely over coastal Tamilnadu, Puducherry & Karaikal and isolated heavy rainfall over adjoining areas of south coastal Andhra Pradesh and Rayalaseema on 08th December.
- ❖ Light to moderate rainfall at most places with heavy to very heavy rainfall at a few places and extremely heavy rainfall at isolated places very likely over north coastal Tamilnadu, Puducherry and adjoining south Coastal Andhra Pradesh and isolated heavy to very heavy rainfall likely over north interior Tamilnadu and adjoining Rayalaseema on 09th December.
- ❖ It is likely to reduce to Light to moderate rainfall at most places with heavy to very heavy rainfall at isolated places likely over north Tamilnadu and Rayalaseema and south Andhra Pradesh on 10th December.

(ii) Wind warning:

- ❖ **Squally wind, speed reaching 50-60 kmph gusting to 70 kmph**, is likely to prevail over Southeast Bay of Bengal during next 24 hours and then reduce to **40-45 kmph gusting to 55 kmph on 8th Dec.**
- ❖ **Squally wind, speed reaching 50-60 kmph gusting to 70 kmph** prevailing over Southwest Bay of Bengal, would increase gradually becoming **60-70 kmph gusting to 80 kmph** from 7th evening. It would further increase becoming Gale wind, speed reaching **70-80 kmph gusting to 90 kmph**, over the region from 8th morning and **80-90 kmph gusting to 100 kmph** during 08th evening to 09th morning. It would decrease thereafter gradually.
- ❖ **Squally wind, speed reaching 40-50 kmph gusting to 60 kmph**, likely to commence along & off Tamilnadu, Puducherry, south Andhra Pradesh and north Sri Lanka coasts coast from 08th December morning, becoming **50-60 kmph gusting to 70 kmph** from 08th December evening, **70-80 kmph gusting to 90 kmph** from 09th December evening to 10th December morning. It is likely to reduce gradually to **50-60 kmph gusting to 70 kmph** by afternoon of 10th December and then to **40-50 kmph gusting to 60 kmph** by 10th December night.
- ❖ **Squally wind, speed reaching 40-50 kmph gusting to 60 kmph**, likely over Gulf of Mannar from 08th December evening becoming **50-60 kmph gusting to 70 kmph** from 09th December evening to 10th December morning. It is likely to reduce gradually thereafter.

(iii) Sea condition

- ❖ **Sea condition likely to be rough to very rough** over Southeast Bay of Bengal on 07th.
- ❖ **Sea condition likely to be rough to very rough** over Southwest and adjoining areas of Westcentral Bay of Bengal till 7th evening and very rough to high thereafter till 10th morning and improve gradually thereafter.
- ❖ **Sea condition likely to be rough to very rough** along & off South Andhra Pradesh, Tamil Nadu, Puducherry and Sri Lanka coasts on 07th, 08th and 10th and high on 9th December.

(iv) Fishermen Warning (warning graphics enclosed)

Fishermen are advised not to venture into:

- ❖ Southeast Bay of Bengal on 07th December.
- ❖ Southwest Bay of Bengal during 07th-10th December
- ❖ Along & off Sri Lanka coast during 07th-09th December.
- ❖ Along & off Tamilnadu, Puducherry and South Andhra Pradesh coasts and Gulf of Mannar during 07th-10th December.
- ❖ Fishermen out at sea should return to the coast or move to the safe area.

(v) Adverse Weather Warning for onshore and off-shore operations

- ❖ Regulate on-shore and off-shore operations over Southeast Bay of Bengal on 07th and over Southwest Bay of Bengal during 07th-10th; along & off Tamilnadu-Puducherry-South Andhra Pradesh coasts and Gulf of Mannar during 08th-10th December.

(vi) Damage expected over Coastal Tamilnadu, Puducherry and adjoining south coastal Andhra Pradesh

- ❖ Damage to thatched houses/ huts. Unattached metal sheets may fly.
- ❖ Minor damage to power and communication lines.
- ❖ Major damage to Kutchha and some damage to Pucca roads. Flooding of escape routes.
- ❖ Breaking of tree branches, uprooting of small trees. Dead limbs blown from trees.
- ❖ Damage to banana and papaya trees and near coastal agriculture due to salt spray. Damage to paddy and other standing crops.
- ❖ Inundation/localized flooding in low lying areas due to heavy rains
- ❖ Traffic may be disrupted due to poor visibility in association with heavy rain

(vii) Action suggested over Coastal Tamilnadu, Puducherry and adjoining south coastal Andhra Pradesh

- ❖ Total suspension of fishing operations during 07th-10th December.
- ❖ Regulate onshore and off-shore operations during 7-10 Dec.
- ❖ People are advised to be cautious while going outside.
- ❖ Regulate traffic.
- ❖ People should not move nearby to vulnerable structures.

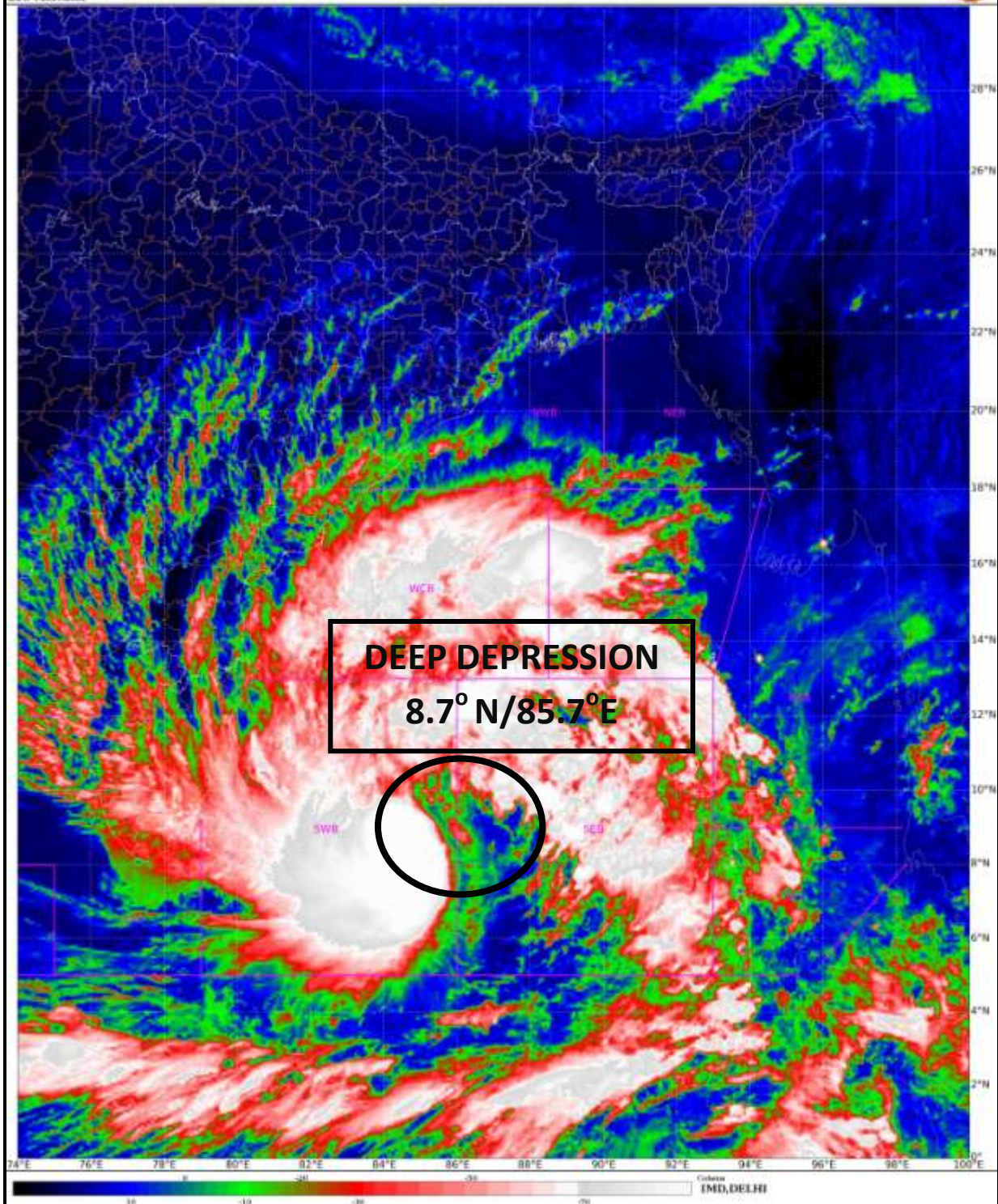
System is under continuous surveillance and the next bulletin will be issued at 1430 hours IST of today, the 07th Dec, 2022.

(RK JENAMANI)
Scientist F, Cyclone Warning Division, New Delhi

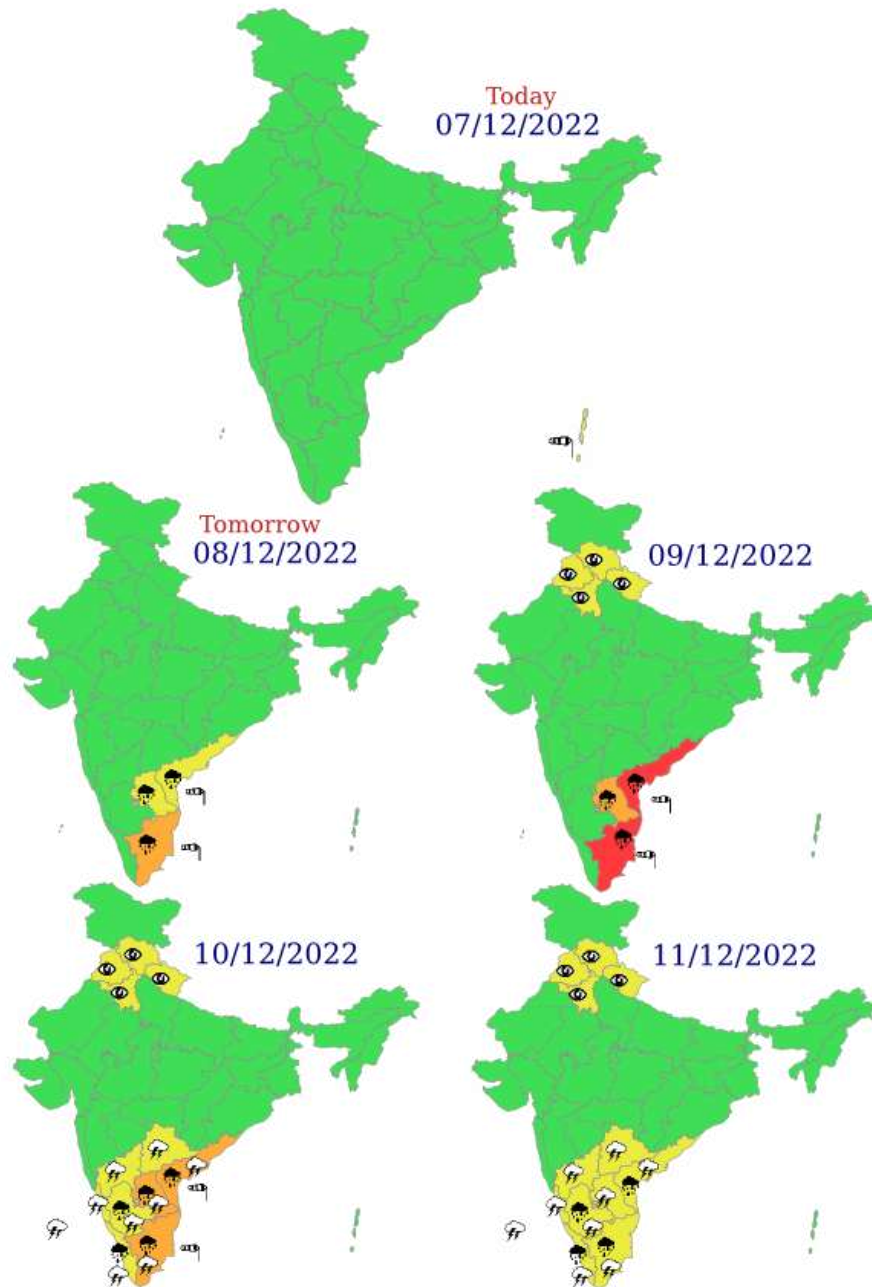
Copy to: ACWC Kolkata/ ACWC Chennai/ CWC Bhubaneswar/CWCVisakhapatnam/MO Port Blair

SAT : INSAT-3D IMG
IMG_TIR1_TEMP 10.6 um
LIC Mercator

07-12-2022/(0530 to 0557) GMT
07-12-2022/(1100 to 1127) IST



Multi hazard Warning Graphics

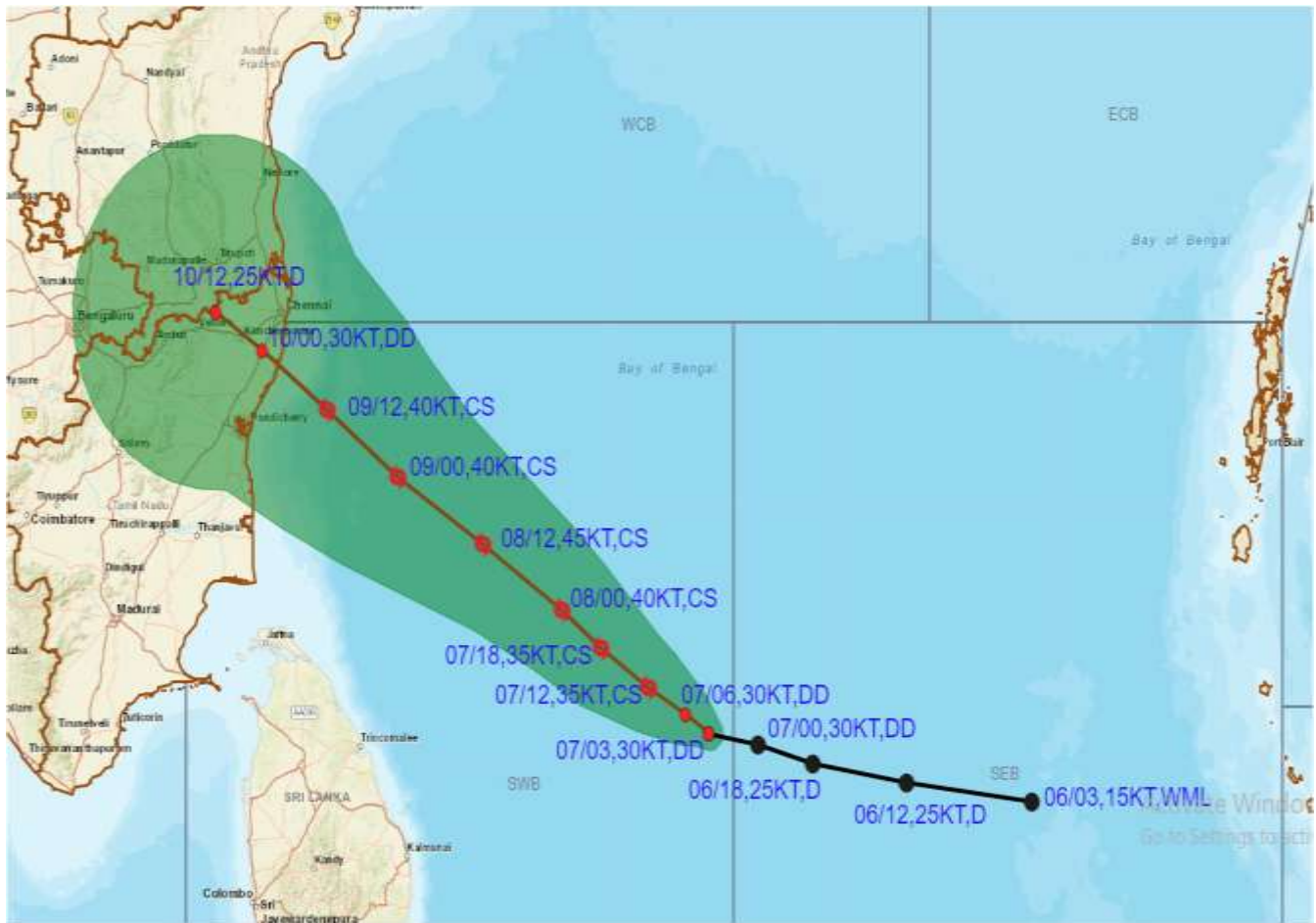


LEGEND: Spatial rainfall distribution: Isolated: <25%, A few: 26-50%, Many: 51-75%, Most: 76-100%
 Rainfall amount (mm): Heavy rain: 64.5 – 115.5, Very heavy rain: 115.6 – 204.4, Extremely heavy rain: 204.5 or more.

	Heavy Rain		Heavy Snow		Thunderstorm		Dust Storm
	Strong Winds		Visibility		Cyclone		Squall/ Hall
	Frost		Cold Wave		Heat Wave		Sea State



OBSERVED AND FORECAST TRACK OF DEEP DEPRESSION OVER SOUTHWEST AND ADJOINING SOUTHEAST BAY OF BENGAL BASED ON 0300 UTC OF 07th DECEMBER, 2022.



DATE/TIME IN UTC

IST=UTC + 0530

L: LOW PRESSURE AREA

WML: WELL MARKED LOW PRESSURE AREA

D: DEPRESSION (17-27 KT)

DD: DEEP DEPRESSION (28-33 KT)

CS: CYCLONIC STORM (34-47 KT)


SCS: SEVERE CYCLONIC STORM (48-63KT)


VSCS: VERY SEVERE CYCLONIC STORM (64-89 KT)

ESCS: EXTREMELY SEVERE CYCLONIC STORM (90-119 KT)

SuCS: SUPER CYCLONIC STORM (\geq 120 KT)


 LESS THAN 34 KT

 34-47 KT

 \geq 48 KT

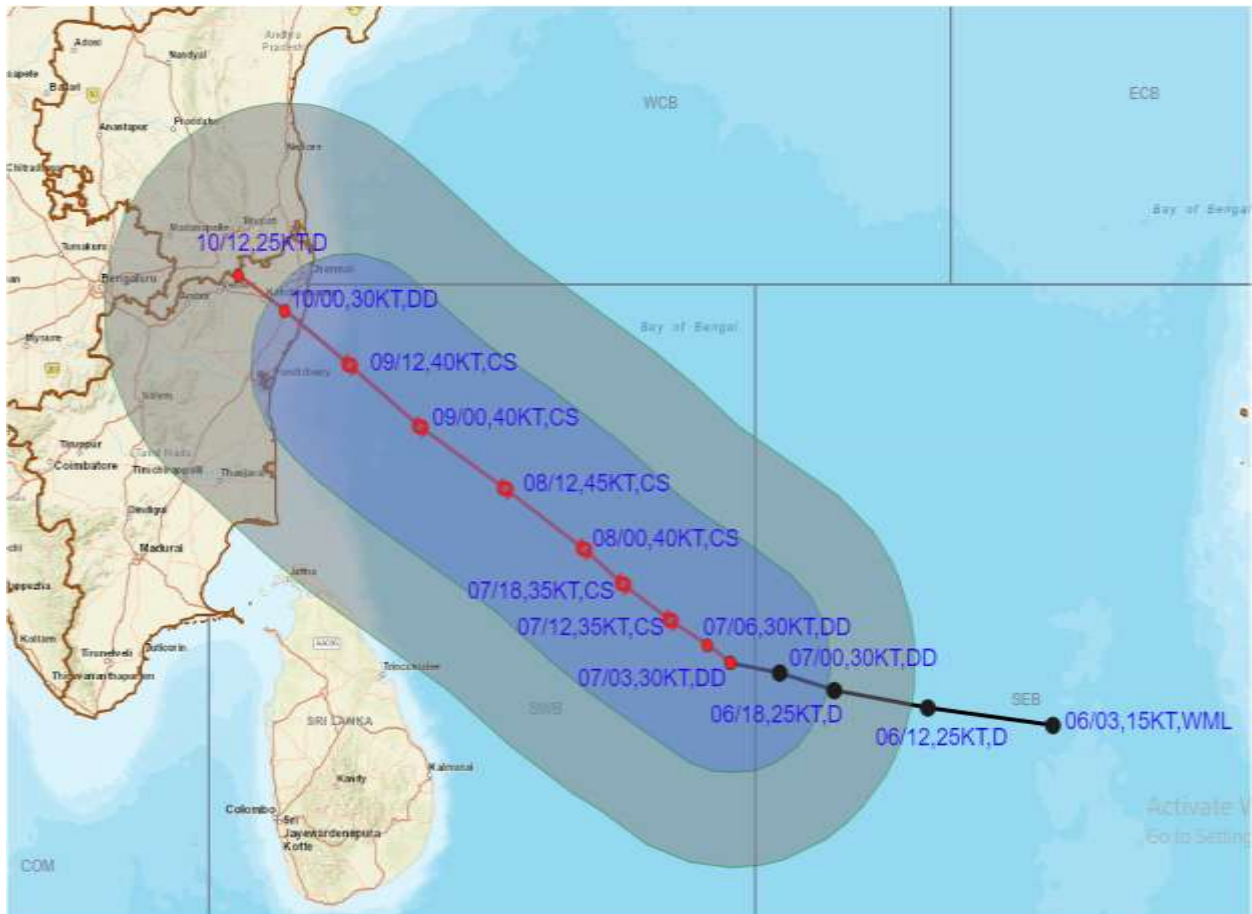
 OBSERVED TRACK

 FORECAST TRACK

 CONE OF UNCERTAINTY



OBSERVED AND FORECAST TRACK ALONGWITH QUADRANT WIND DISTRIBUTION OF DEEP DEPRESSION OVER SOUTHWEST AND ADJOINING SOUTHEAST BAY OF BENGAL BASED ON 0300 UTC OF 07th DECEMBER, 2022.



DATE/TIME IN UTC

IST=UTC + 0530

L: LOW PRESSURE AREA

WML: WELL MARKED LOW PRESSURE AREA

D: DEPRESSION (17-27 KT)

DD: DEEP DEPRESSION (28-33 KT)

CS: CYCLONIC STORM (34-47 KT)

SCS: SEVERE CYCLONIC STORM (48-63 KT)

VSCS: VERY SEVERE CYCLONIC STORM (64-89 KT)

ESCS: EXTREMELY SEVERE CYCLONIC STORM (90-119 KT)

SuCS: SUPER CYCLONIC STORM (≥ 120 KT)

● LESS THAN 34 KT

○ 34-47 KT

● ≥ 48 KT

— OBSERVED TRACK

— FORECAST TRACK

▲ CONE OF UNCERTAINTY

AREA OF MAXIMUM SUSTAINED WIND SPEED:

■ 28-33 KT (52-61 KMPH)

■ 34-49 KT (62-91 KMPH)

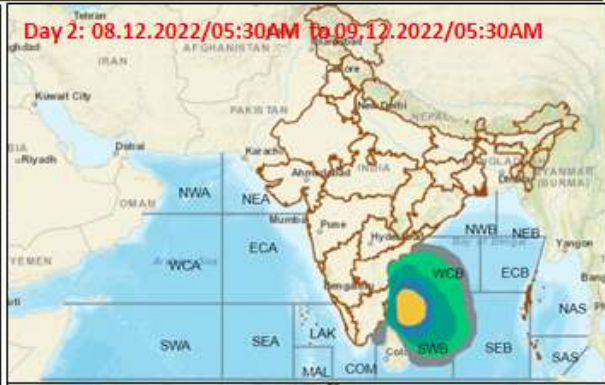
■ 50-63 KT (92-117 KMPH)

■ ≥ 64 KT (≥ 118 KMPH)

IMPACT OVER THE SEA

MSW (knot/kmph)	Impact	Action
28-33 (52-61)	Very rough seas	Total suspension of fishing operations
34-49 (62-91)	High to very high seas	Total suspension of fishing operations
50-63 (92-117)	Very high seas	Total suspension of fishing operations
≥ 64 (≥ 118)	Phenomenal	Total suspension of fishing operations

Fishermen warning graphics



	Squally WX with wind speed 40-45 kmph gusting to 55 kmph
	Squally WX with wind speed 45-55 kmph gusting to 65 kmph
	Squally wind speed 45-55 kmph gusting to 65 kmph
	Squally wind with wind speed 55-65 kmph gusting to 75 kmph
	Gale wind with wind speed 70-80 kmph gusting to 90 kmph
	Gale wind with wind speed 89-90 kmph gusting to 100 kmph

Fishermen are advised not to venture into the marked areas.